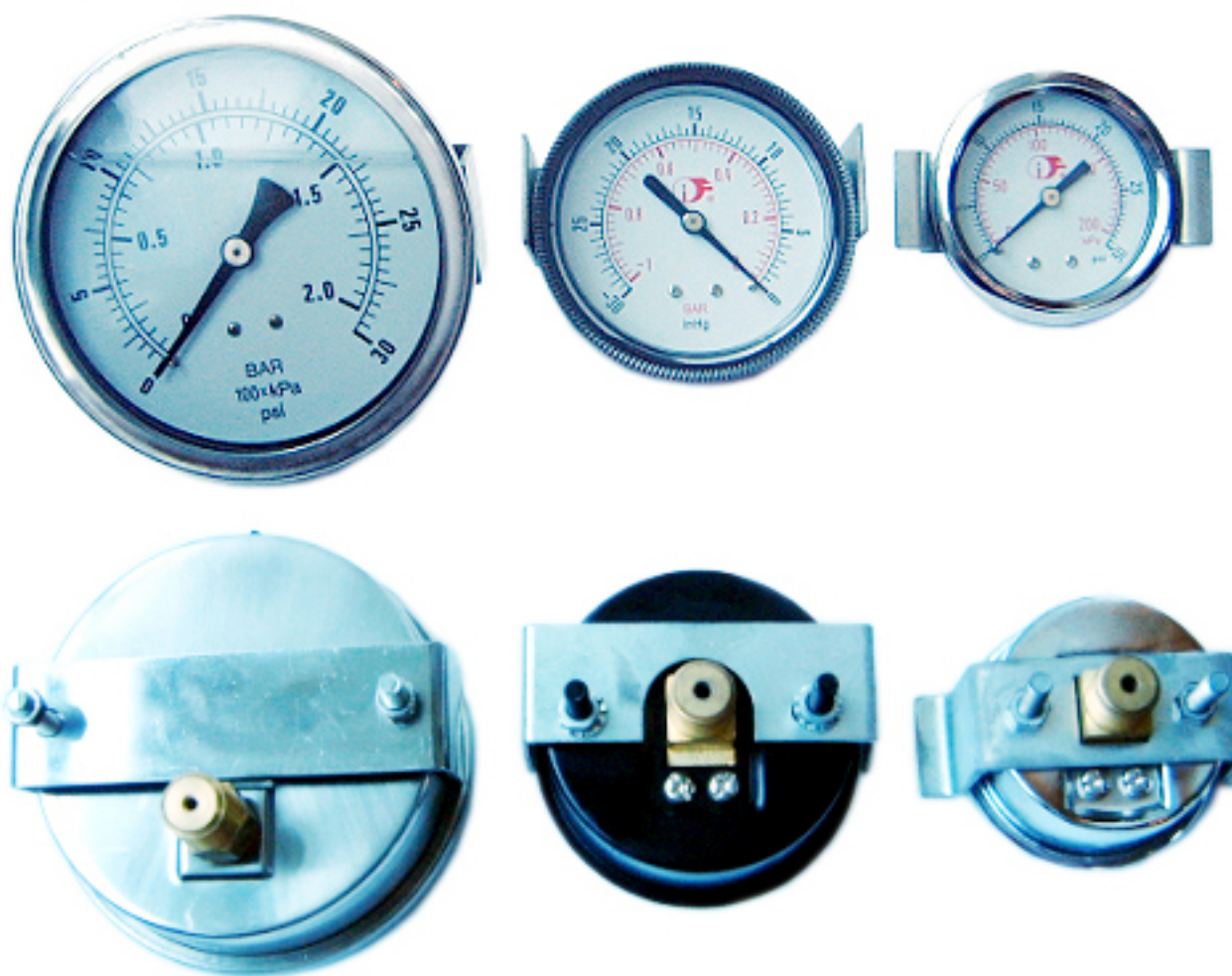


U-Clamp Dry Gauge

Picture



Parameter

Model #: UX001

Description: For General purpose of measurement.

Size: Available in size 1.5", 2", 2.5", and 3.5"

Pressure range: 15 to 10,000psi, Vacuum, and compound available

Socket: Brass CBM

Connection thread: Available in NPT , BSP, BSPT, PT, ZG, or other special specification.

Bourdon tube: Brass

Case: Black or chrome plated steel

Bezel: Crimped-on Chrome bezel

Window (Lens): Acrylic, and Polycarbonate lens available

Dial face: With ALF logo or customer logo, single and dual scale (psi, kpa, bar, kg/cm²) available

Bracket: U-clamp mounting

Accuracy: +/- 3/2/3% of full scale (ASME B40.1 Grade B)

Ambient temperature: -40 Degrees centigrade to 60 Degrees centigrade

Option Info: Restrictor

Order restrictor to have a brass restrictor pressed into the socket of the gauge to reduce the size of the internal bore. The restrictor dampens the effects of pressure pulsation which in turn helps prevent internal damage to the Bourdon tube and movement and extends the life of the gauge