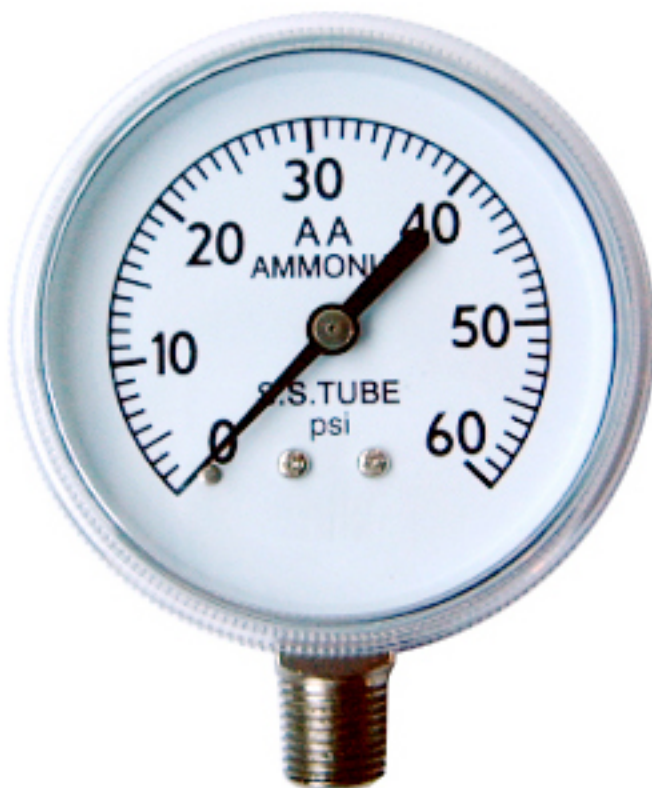


Ammonia Gauge

Picture



Dry Ammonia Gauge

Model #: AQ001

Description: For Ammonia ambient pressure test

Size: Available in size 2.5"

Pressure range: -30"Hg-0-150 psi, -30"Hg-0-300 psi, 0-60 psi, 0-160 psi, 0-400 psi

Socket: Nickel plated steel LM

Connection thread: Available in NPT, or other special specification.

Bourdon tube: 316 SS

Case: Chrome plated steel case or grey steel case

Window (Lens): Screw-on polycarbonate lens

Dial face: No logo single scale psi or dual scale psi/

Accuracy: +/-3/2/3% of full scale

Option Info: 1) Restrictor

Order this option to have a SS restrictor pressed into the socket of the gauge to reduce the size of the internal bore. The restrictor dampens the effects of pressure pulsation which in turn helps prevent internal damage to the Bourdon tube and movement and extends the life of the gauge

Liquid-filled all SS Ammonia Gauge

Model #: AQ002

Description: For Ammonia ambient pressure test

Size: Available in size 2.5" & 4"

Pressure range: -30"Hg-0-150 psi, -30"Hg-0-300 psi, 0-60 psi, 0-160 psi, 0-400 psi

Socket: 316 SS

Connection thread: Available in NPT, or other special specification.

Bourdon tube: 316 SS

Case: 304 SS case

Bezel: Crimped 304 SS, also available with screw-on 304 SS bezel

Window (Lens): Polycarbonate lens

Dial face: No logo single scale psi or dual scale psi/

Accuracy: +/-3/2/3% of full scale

Option Info: 1) Restrictor

Order this option to have a SS restrictor pressed into the socket of the gauge to reduce the size of the internal bore. The restrictor dampens the effects of pressure pulsation which in turn helps prevent internal damage to the Bourdon tube and movement and extends the life of the gauge